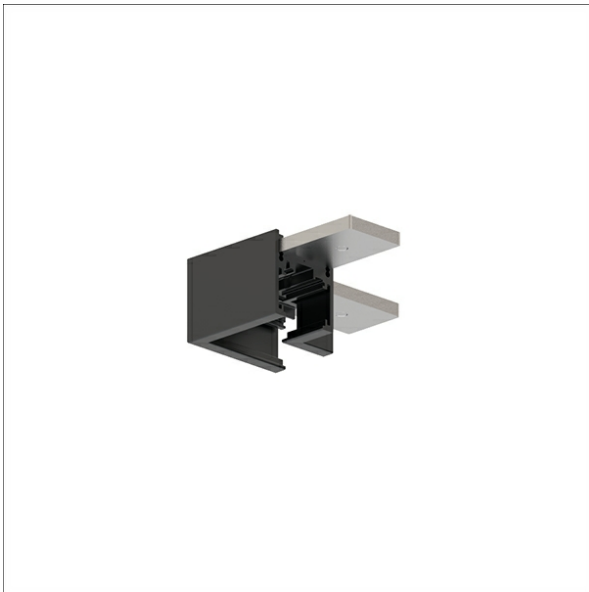


Mounted 48 V

NEO-A L/S/S-9511/ST6



Description

- I-connector mechanical
- housing made from aluminium
- fixing bracket made from steel
- screw fixing into track

Standard options



Dimensions / Weights

Length	72 mm
Width	72 mm
Height	29 mm
Net weight	0.05 kg
Gross weight	0.05 kg

Colours	Article no.	EAN
black	665456	4043544746894
white	665457	4043544746900

