

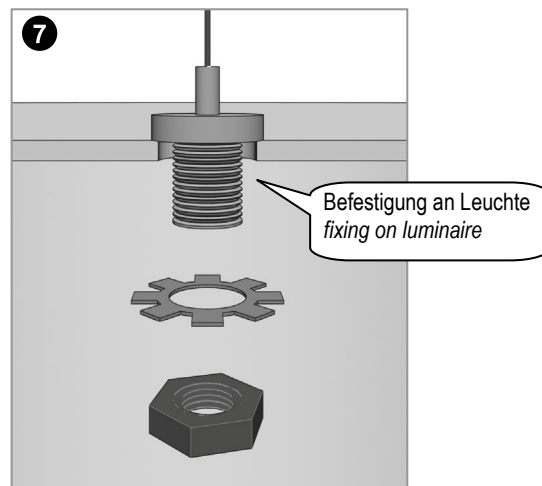
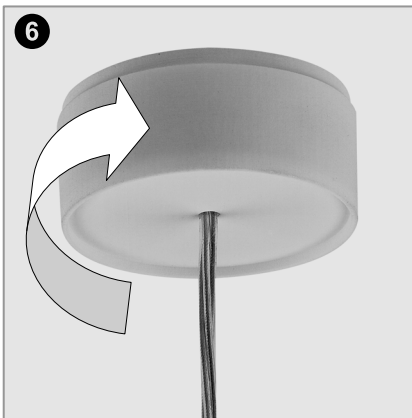
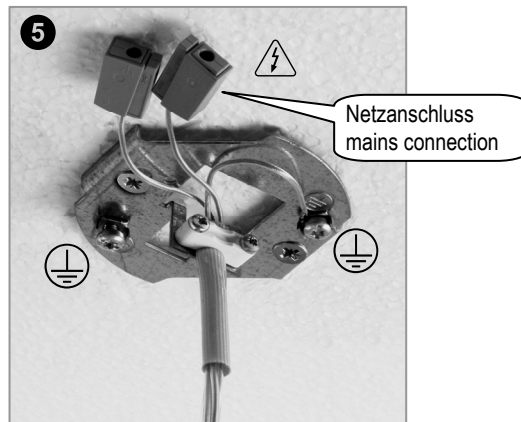
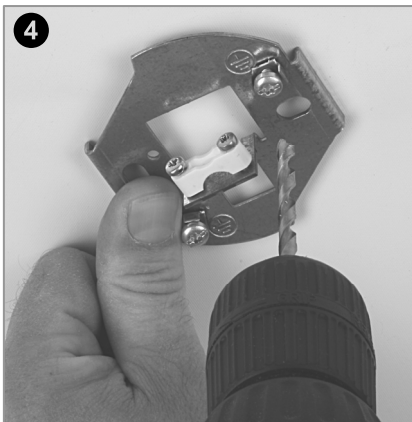
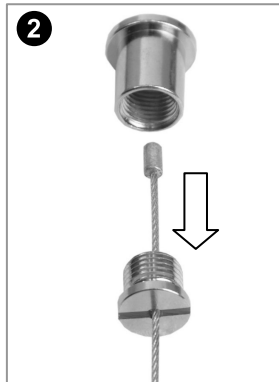


D

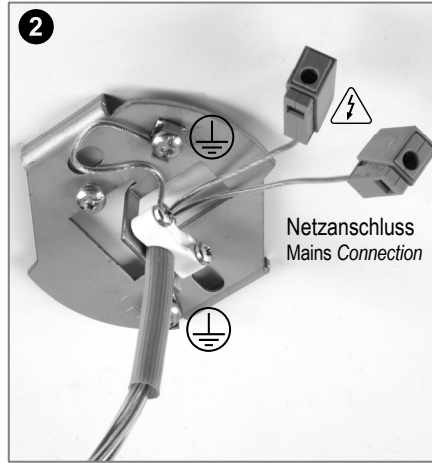
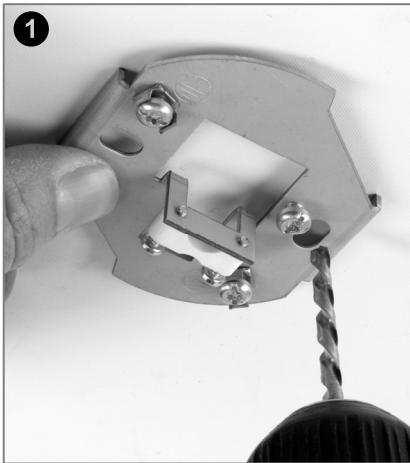
 Netzanschluss muss bauseitig gemäß der geforderten Schutzart und Schutzklasse vorhanden sein. **Netzanschluss darf nur von Elektrofachkräften durchgeführt werden.** Örtliche Vorschriften beachten.

GB

 Mains connection must be provided on-site according to the required protection type and class. **Mains Connection must only be done by electricians.** Consider local regulations.



Kabelabhängung mit Einspeisung / Cable suspension with feeder



Drahtseilabhängung mit Einspeisung / Wire-ropes suspension with feeder

